

IM MOLEKULARLABOR

DIE CHEMIE IM BUBBLETEA

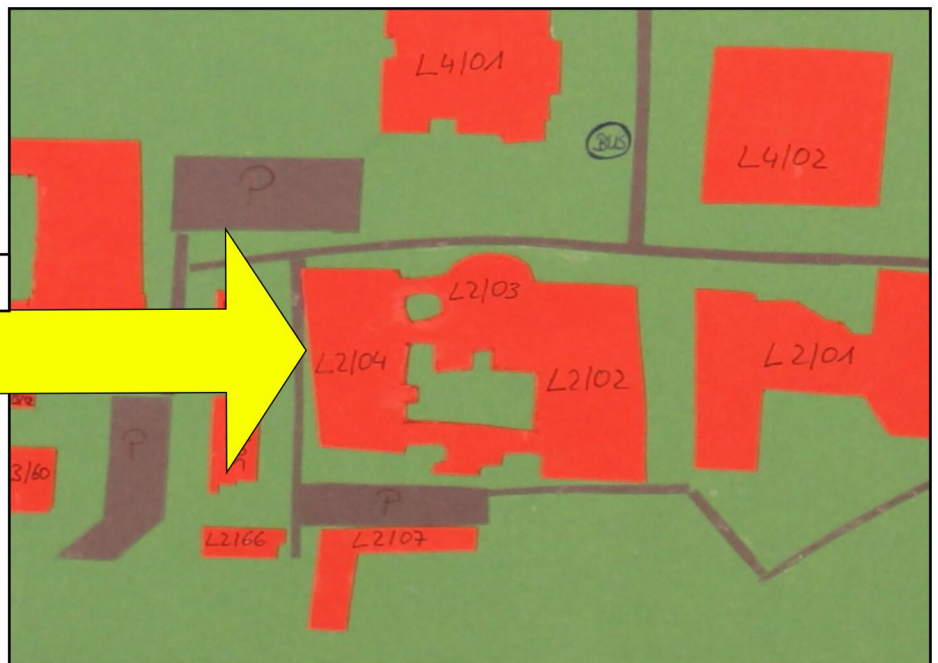


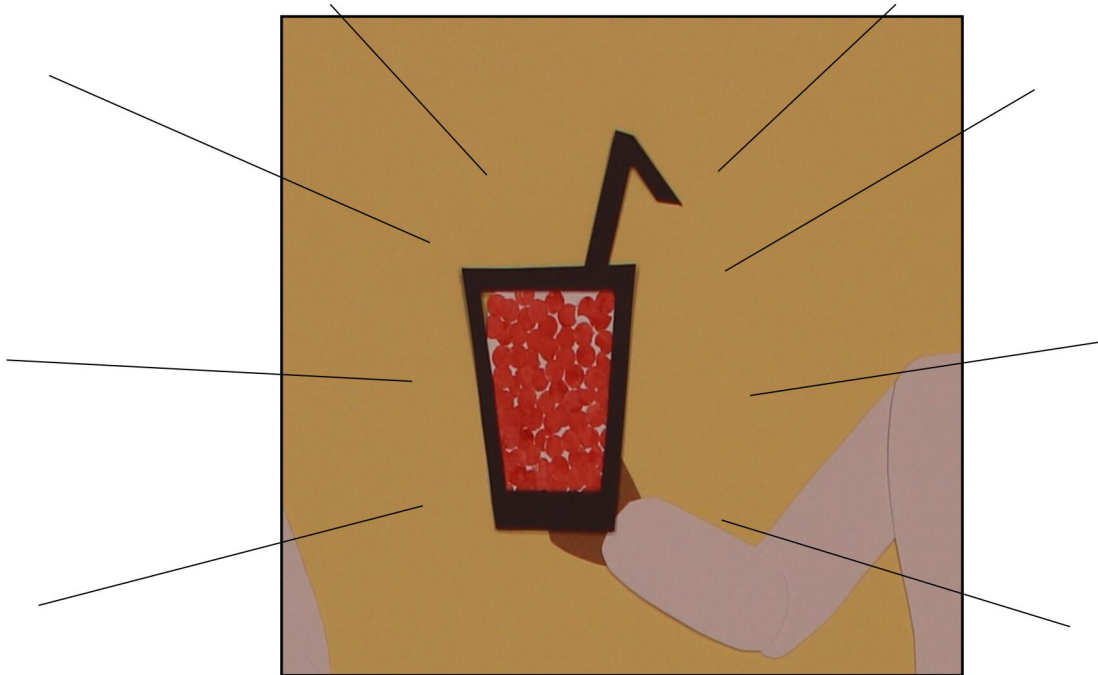
EIN GANZ NORMALER TAG...

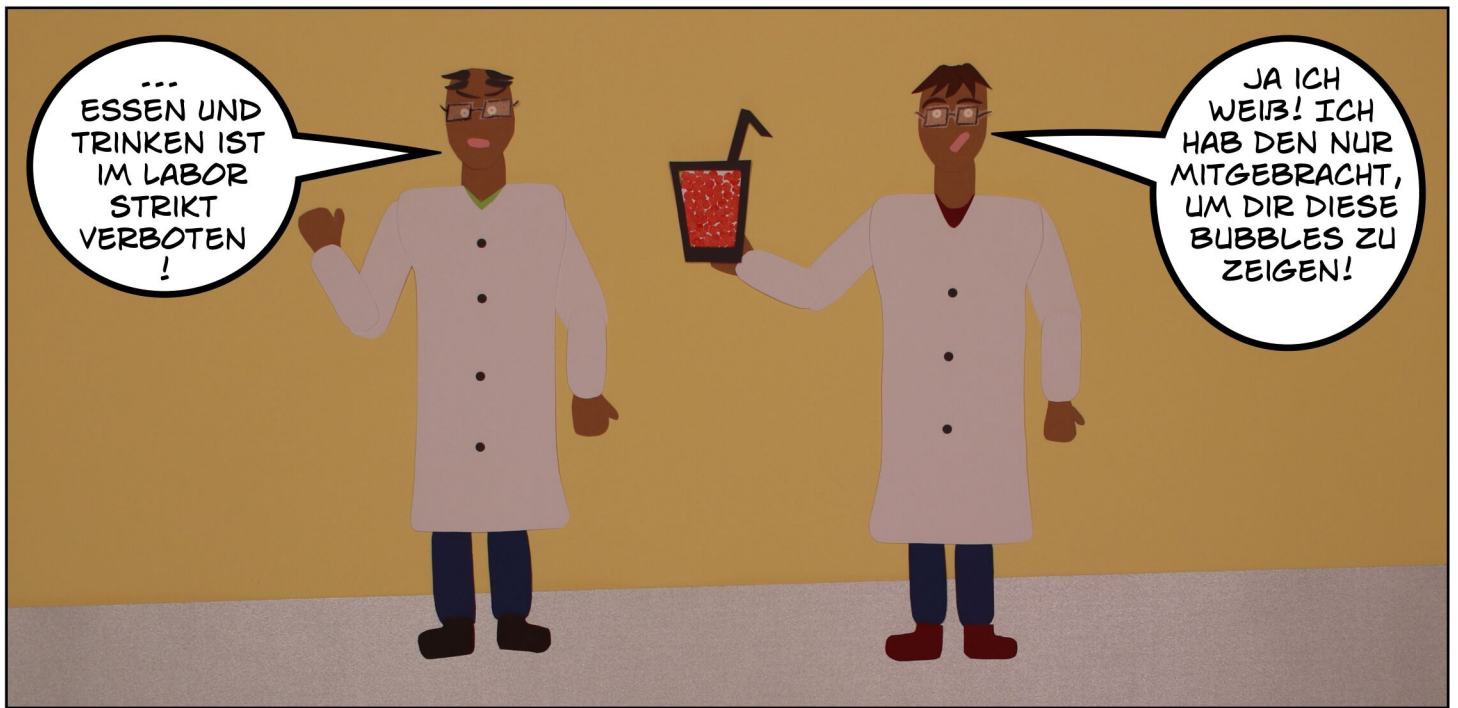
Technische
Universität
Darmstadt
-Lichtwiese

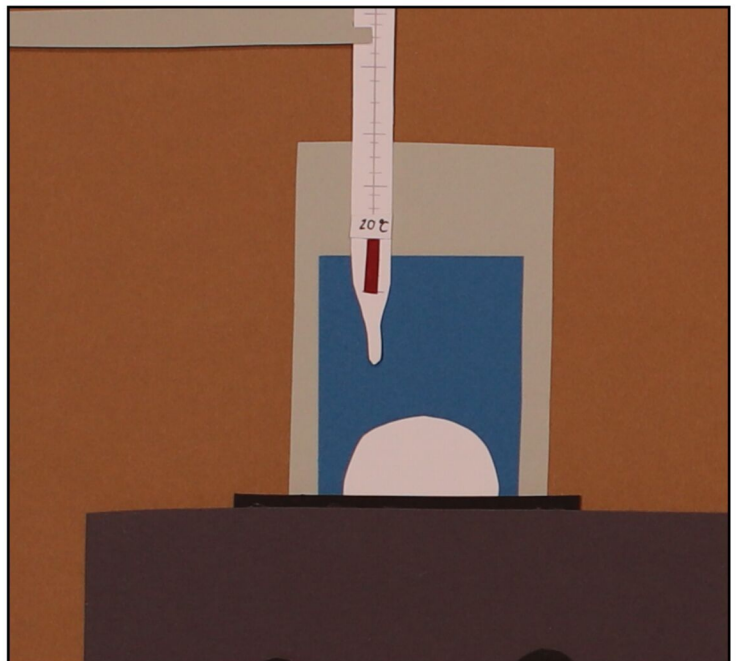
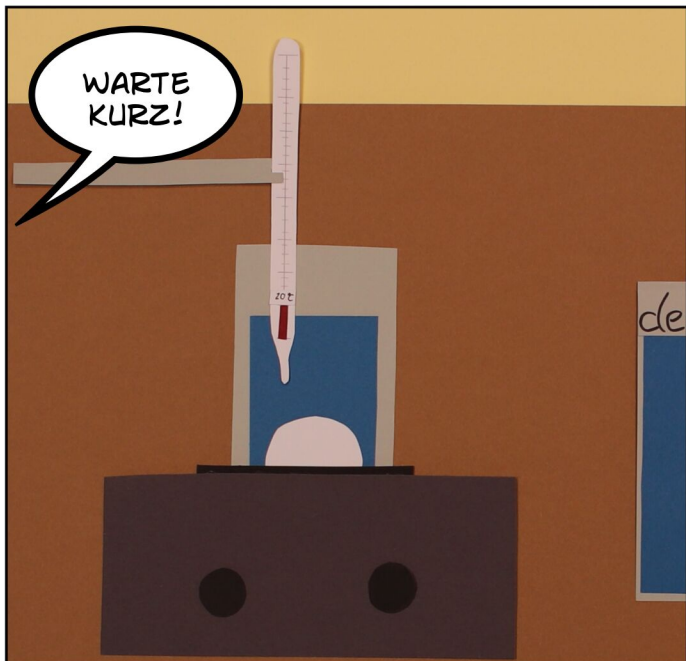
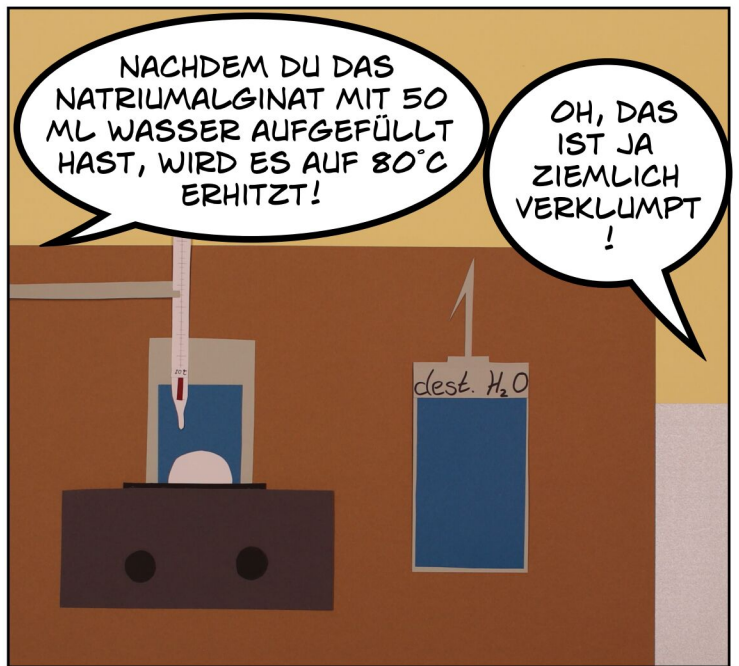


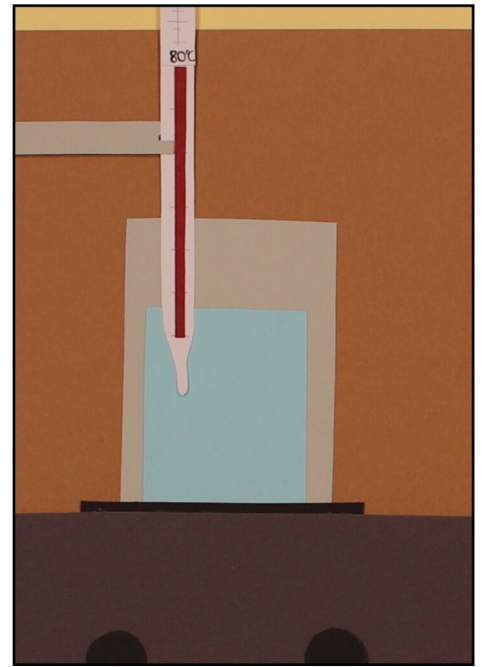
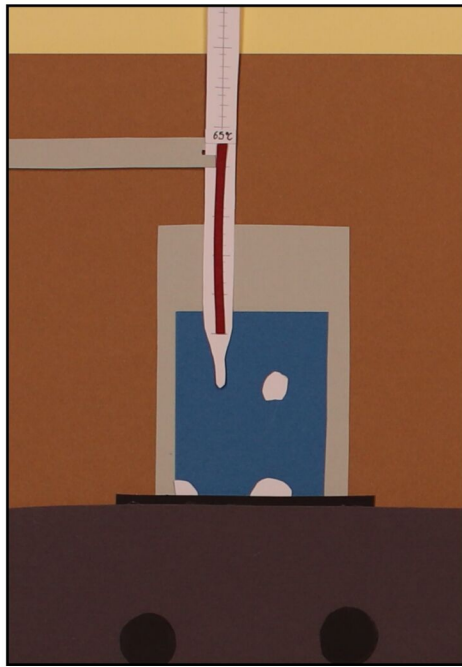
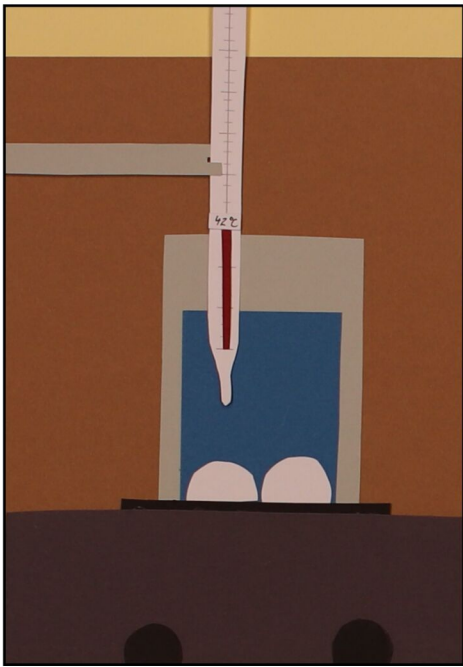
... IN DARMSTADT'S LABOREN

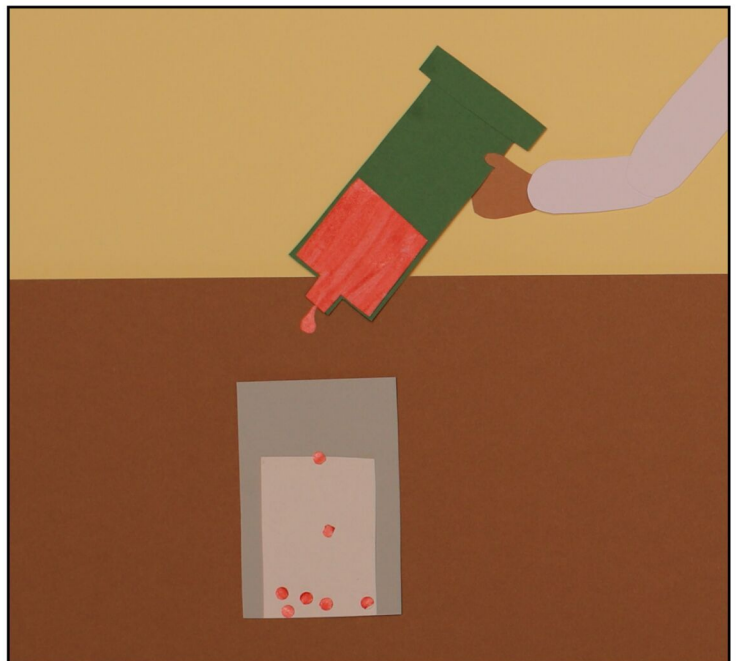
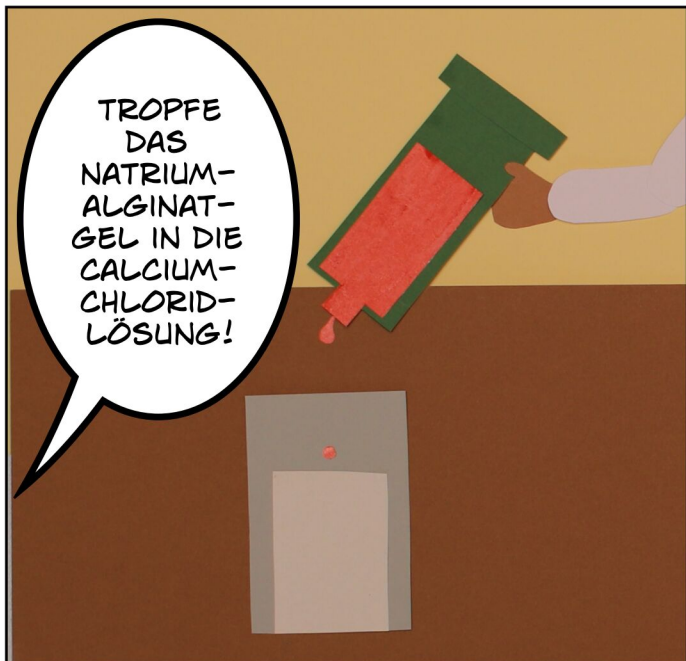
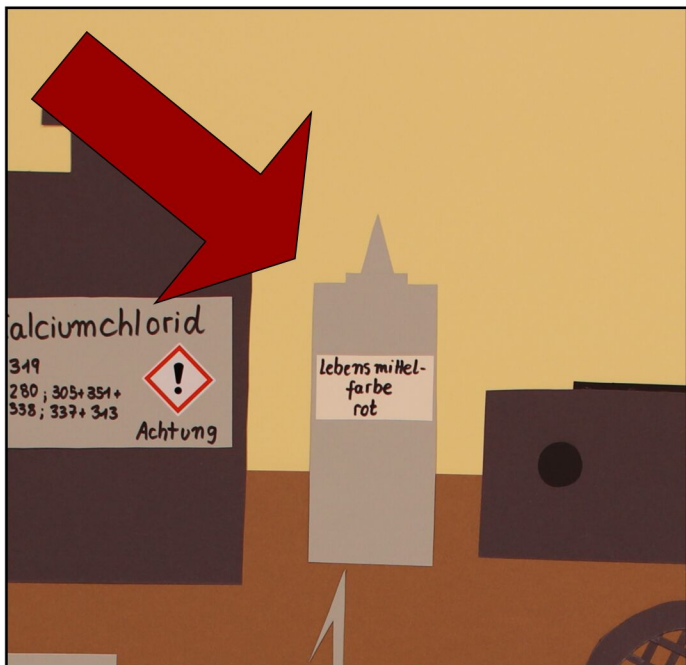


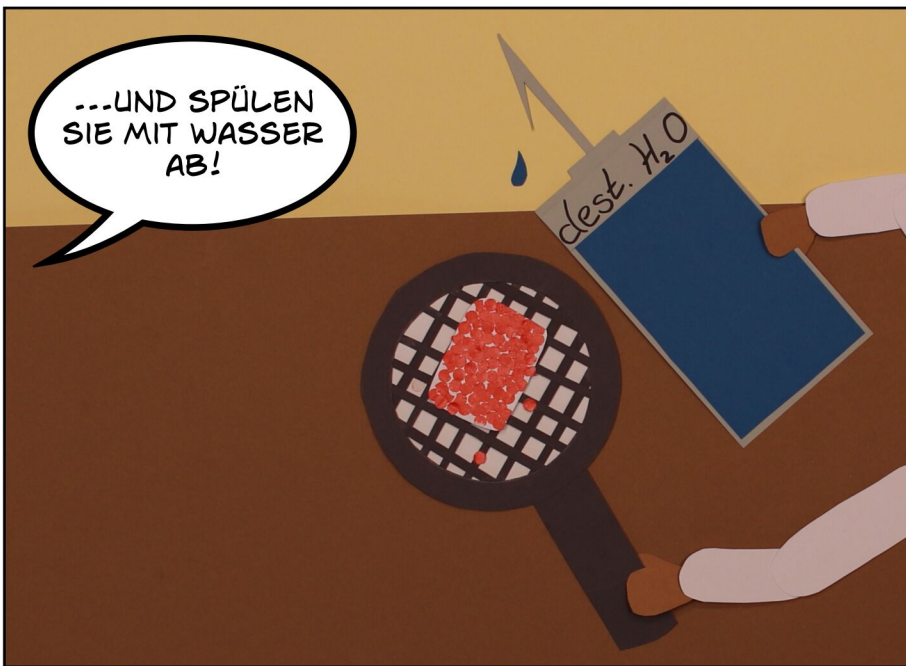
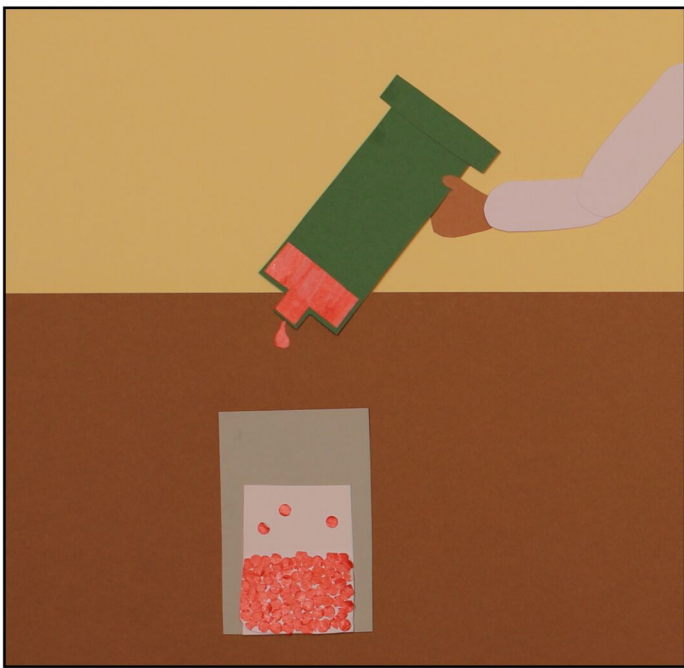


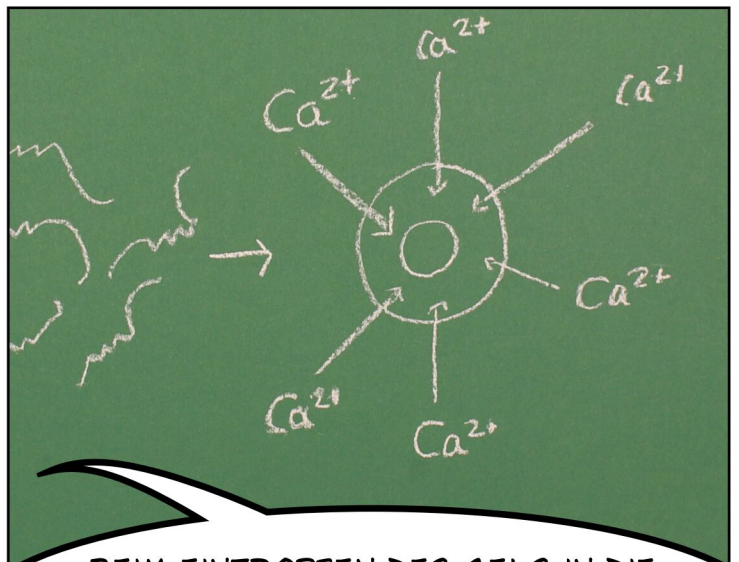






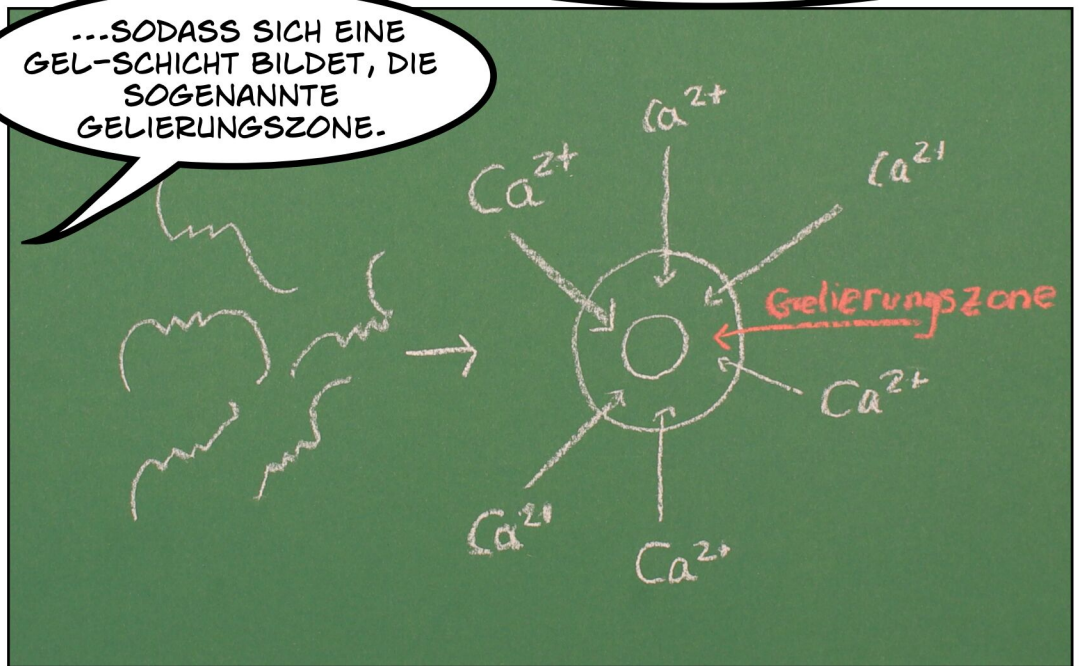




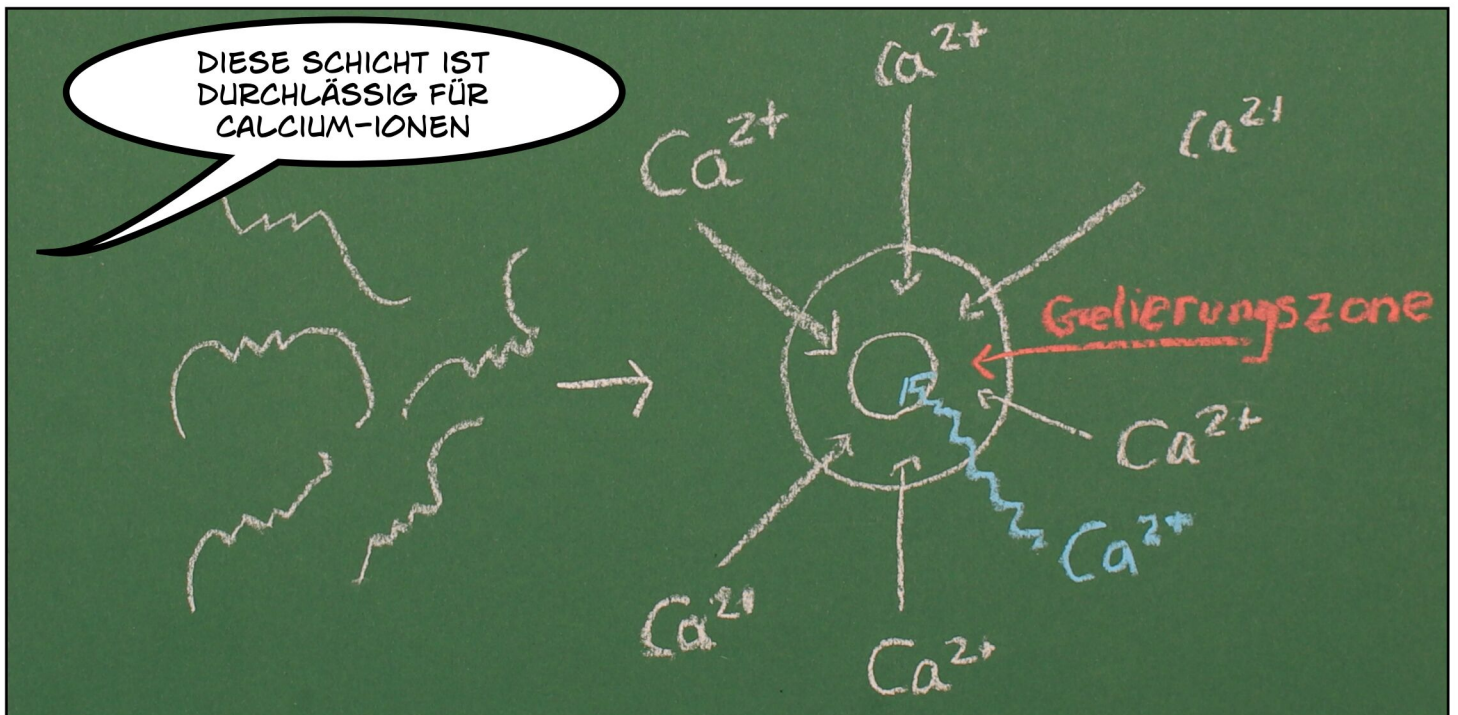


* DER BEGRIFF HYDROKOLLOIDE UMFASST EINE GRUPPE VON ZUCKERMOLEKÜLEN BZW. PROTEINEN, DIE IN WASSER GELÖST ZUR GELBILDUNG NEIGEN.

...SODASS SICH EINE GEL-SCHICHT BILDET, DIE SOGENANNT GELIERUNGSZONE.



DIESE SCHICHT IST DURCHLÄSSIG FÜR CALCIUM-IONEN







TEAM



ANNA



&

MICHELLE

